

Type BA

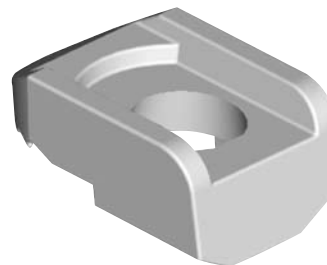
- **Manufactured from high strength ductile iron**
- **Hot Dip Galvanized for corrosion protection**
- **All loads guaranteed with a safety factor of 5:1**

The Type BA clamp has a recessed upper surface that is designed to hold the head of a bolt in place while the nut is tightened. The rear section of the clamp is called the tail and is available in three different tail lengths: size 1, size 2 and size 3 [see Dimension E on the table below]. By selecting the appropriate tail length and with the use of BEAMCLAMP shims, any thickness of steel flange can be connected.

For selection of correct tail length please refer to Table 1 on page 16.

The Type BA clamp is designed to suit parallel flanges such as wide flange beams and angles. For tapered flanges, please use the Type BT or BK1 products. BEAMCLAMP recommends that SAE Grade 5 bolts be used with the Type BA clamp.

**Type BA
For Flanges**



The Safe Working Loads (SWL) are based on assemblies in typical application conditions.

product code	A bolt dia	B	C	D	E			width	torque (ft lb)	tensile SWL (lbs) (per bolt)	friction SWL (lbs) (per 4 bolts)
					1	2	3				
BA G08	5/16	3/8	5/8	3/16	/	1/8	/	13/16	4	281	/
BA G10	3/8	1/2	13/16	1/4	1/8	3/16	5/16	1	14	562	/
BA G12	1/2	5/8	1	5/16	3/16	1/4	3/8	1-1/8	51	1293	292
BA G16	5/8	11/16	1-1/4	3/8	3/16	5/16	7/16	1-7/16	109	2219	877
BA G20	3/4	13/16	1-3/8	7/16	5/16	3/8	1/2	1-3/4	210	3703	2473
BA G24	1	1	1-15/16	1/2	3/8	1/2	5/8	2-1/8	355	4743	4047

Add 1, 2 or 3 to the product code to indicate the desired tail length. For example, a 5/8" bolt diameter with a 5/16" tail would be product code BA2G16.



Do not exceed the Safe Working Loads (SWL) specified.

