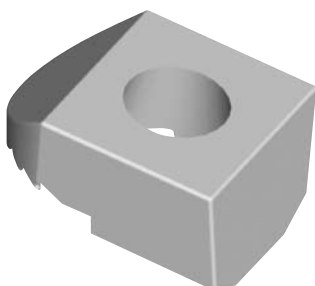


# Type BB

- **Manufactured from high strength ductile iron**
- **Hot Dip Galvanized for corrosion protection**
- **All loads guaranteed with a safety factor of 5:1**

**Type BB  
For Flanges**



The Type BB clamp has a flat upper surface that allows a nut to be tightened down and is often used in conjunction with the recessed Type BA. This flat surface makes the Type BB clamp ideal for use with studs, J-Bolts or threaded rod. This flat surface also makes the product suitable for use with ASTM A325 bolts where the oversized head is too large to be held by the recess of the Type BA clamp.

The rear section of the clamp is called the tail and is available in three different tail lengths: size 1, size 2 and size 3 [see Dimension E on the table below]. By selecting the appropriate tail length and with the use of BEAMCLAMP shims, any thickness of steel flange can be connected. For selection of the correct tail length, please refer to Table 1 on page 16.

The Type BB clamp is designed to suit parallel flanges such as wide flange beams and angles. For tapered flanges, please use the Type BW or BK1 products.

*The Safe Working Loads (SWL) are based on assemblies in typical application conditions.*

product code	A bolt dia	B	C	D	E			width	torque (ft lb)	tensile SWL (lbs) (per bolt)	friction SWL (lbs) (per 4 bolts)
					1	2	3				
BB G08	5/16	3/8	5/8	3/8	/	1/8	/	13/16	4	281	/
BB G10	3/8	1/2	13/16	7/16	1/8	3/16	5/16	1	14	562	/
BB G12	1/2	5/8	1	1/2	3/16	1/4	3/8	1-1/8	51	1293	292
BB G16	5/8	11/16	1-1/4	11/16	3/16	5/16	7/16	1-7/16	109	2219	877
BB G20	3/4	13/16	1-3/8	13/16	5/16	3/8	1/2	1-3/4	210	3703	2473
BB G24	1	1	1-15/16	1	3/8	1/2	5/8	2-1/8	355	4743	4047

Add 1, 2 or 3 to the product code to indicate the desired tail length. For example, a 3/4" bolt diameter with a 1/2" tail would be product code BB**3**G20.



Do not exceed the Safe Working Loads (SWL) specified.

