

Type BC1/BD1

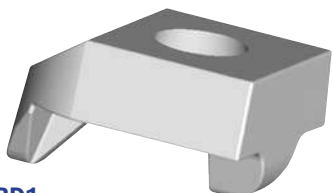
- **Manufactured from high strength ductile iron**
- **Hot Dip Galvanized for corrosion protection**
- **All loads guaranteed with a safety factor of 5:1**

The Type BC1 and BD1 clamps are designed for hooking over the flanges of angles and channels. The Type BC1 clamp has a recessed upper surface that is designed to hold the head of a bolt in place while the nut is tightened. The Type BD1 clamp has a flat upper surface that allows a nut to be tightened down onto it. The nose of the BC1 and BD1 has a rib section that can be removed when clamping thick sections of steel [see Dimension C2 in the table below]. This product is not recommended for frictional applications.

Hook Nose clamps for Angles



BC1



BD1

The Safe Working Loads (SWL) are based on assemblies in typical application conditions.

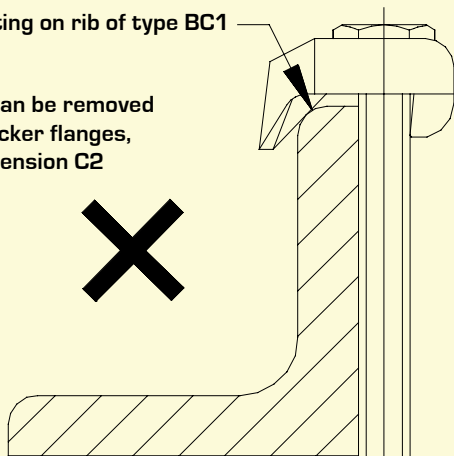
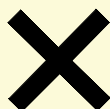
product code	product code	A bolt dia	B	C1	C2	D	E1	E2	width	torque (ft lb)	friction SWL (lbs) (per 4 bolts)
BC1G08	BD1G08	5/16	3/8	3/16	5/16	1/4	3/16	3/8	7/8	2	281
BC1G10	BD1G10	3/8	1/2	3/16	3/8	5/16	1/4	7/16	1-3/16	7	562
BC1G12	BD1G12	1/2	5/8	1/4	1/2	3/8	5/16	1/2	1-1/4	25	971
BC1G16	BD1G16	5/8	11/16	5/16	1/2	7/16	3/8	11/16	1-5/8	54	1686
BC1G20	BD1G20	3/4	13/16	3/8	9/16	9/16	7/16	13/16	1-15/16	105	2473
BC1G24	BD1G24	1	1	1/2	11/16	11/16	1/2	1	2-3/8	178	3860



Do not exceed the Safe Working Loads (SWL) specified.

Flange contacting on rib of type BC1 or BD1

Note: The rib can be removed to allow for thicker flanges, please see dimension C2 for details



Flange contacting on bottom edge of type BC1 or BD1

