

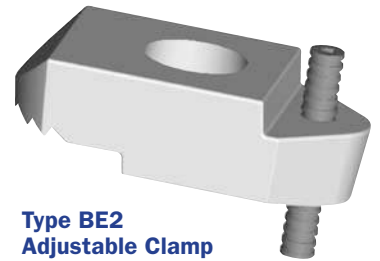
Type BE2

- **Adjustable Clamp to suit any thickness of steel**
- **Manufactured from high strength ductile iron**
- **Hot Dip Galvanized for corrosion protection**
- **All loads guaranteed with a safety factor of 5:1**

The Type BE2 clamp has a flat upper surface that allows a nut to be tightened down, similar to the Type BB product. However, it has the additional feature of a fully threaded screw at the rear of the product that can be adjusted so the grip range of the product matches the flange thickness being connected. The fully threaded screw can be adjusted with a hexagon socket key. This product is ideal for applications where the flange thickness cannot easily be measured or where the flange thickness may vary throughout a project.

The Type BE2 clamp is designed to suit parallel flanges such as wide flange beams and angles. For tapered flanges, please use the Type BK1.

Long shims (BF2 and BG2) can be used to increase the clamping range. See page 12 for details. To make selecting the appropriate shims easier please refer to Table 1 on page 16.



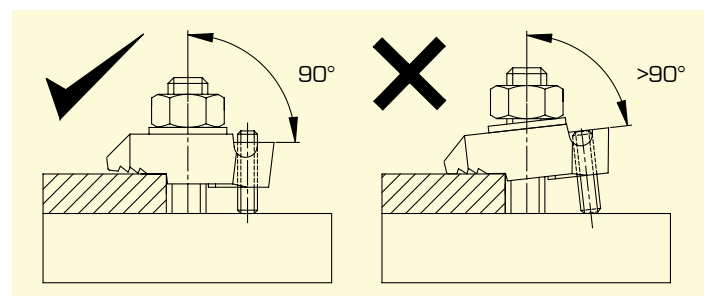
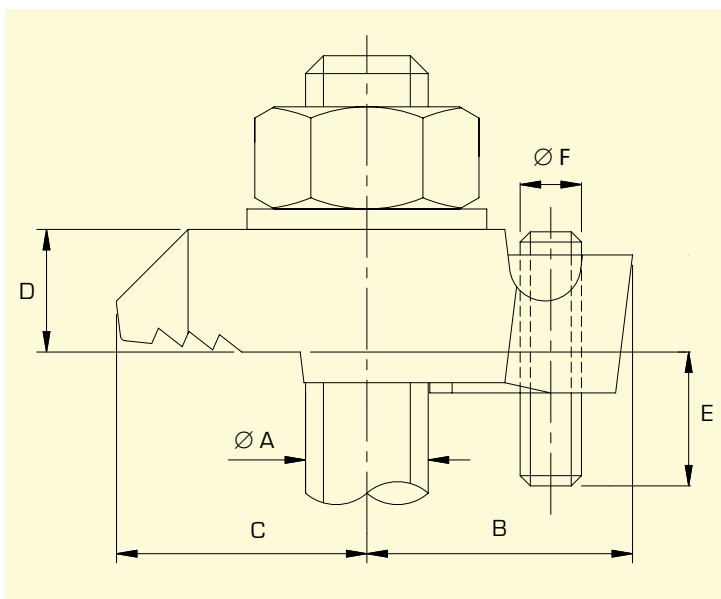
**Type BE2
Adjustable Clamp
for Parallel Flanges**

The Safe Working Loads (SWL) are based on assemblies in typical application conditions.

product code	A bolt dia	B	C	D	E	F screw dia	width	torque (ft lb)	tensile SWL (lbs) (per bolt)	friction SWL (lbs) (per 4 bolts)
BE2G12	1/2	1	1	1/2	1/4 to 7/8	1/4	1-1/8	51	836	292
BE2G16	5/8	1-3/16	1-1/4	11/16	1/4 to 15/16	5/16	1-7/16	109	1855	877



Do not exceed the Safe Working Loads (SWL) specified.



Installation Guide

