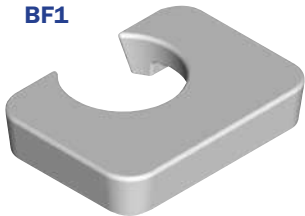
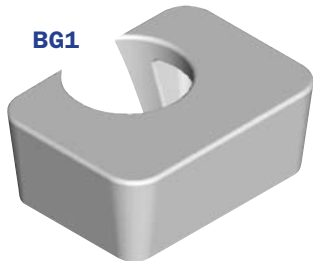


BF1, BG1, BF2, BG2 & BH1

BF1



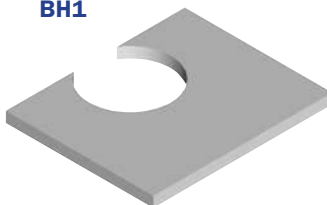
BG1



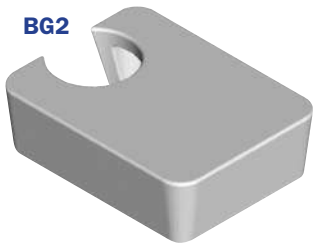
BF2



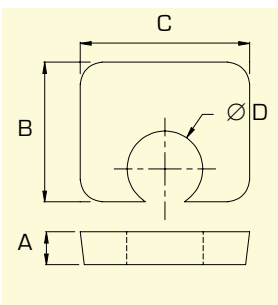
BH1



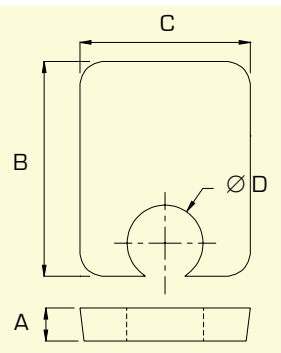
BG2



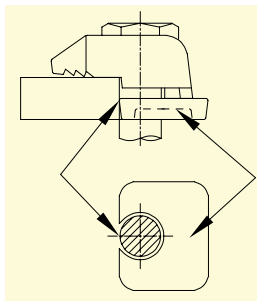
BF1, BG1, BH1



BF2, BG2

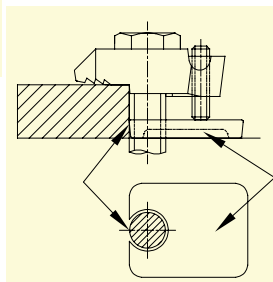


The Type BF1, BG1 and BH1 should be slipped onto the bolt shank with the open end towards the beam steelwork flange as shown.



The Type BF2 and BG2 should be slipped onto the bolt shank with the open end towards the steelwork flange as shown.

The recess in the BF1 and BG1 should always be face downward leaving a flat surface for the tail of the clamp to sit on as shown.



The recess in the BF2 and BG2 should always be face downward leaving a flat surface for the tail of the clamp to sit on as shown.

The Type BF1, BG1, BH1, BF2, and BG2 products act as shims to support the underside of clamps and to adjust the grip of the clamp to accurately suit the thickness of steel being connected. Type BF1, BG1, and BH1 act as shims to support the underside of the Type BA, BB, BT and BW clamps. The BH1 is the thinnest shim, followed by the BF1 and then the BG1. All shims are hot dipped galvanized except the BH1, which is zinc plated.

Type BF2 and BG2 act as shims to support the underside of the Type BE1, BE2 and BK1 clamps. The BF2 and BG2 shims are similar to the BF1 & BG1, but they are longer so they will reach further back and support the longer BE1, BE2 and BK1 products.

These shims can be used separately or combined together depending on the thickness of steel being connected and which clamp type is used. All shims fit over the shank of the bolt so they cannot be removed. Dimensions for the shims are shown below. Tables showing which shim is required to suit a given flange thickness are shown on pages 16 and 17.

Tables for BF1, BG1, BF2, BG2 and BH1

product code	bolt dia	A	B	C	D dia
BF1G08	5/16	1/8	9/16	7/8	3/8
BF1G10	3/8	3/16	11/16	1-1/8	7/16
BF1G12	1/2	1/4	7/8	1-3/16	9/16
BF1G16	5/8	5/16	1-1/8	1-3/8	11/16
BF1G20	3/4	3/8	1-5/16	1-11/16	13/16
BF1G24	1	1/2	1-3/4	2-3/16	1-1/16

product code	bolt dia	A	B	C	D dia
BG1G08	5/16	5/16	9/16	7/8	3/8
BG1G10	3/8	3/8	11/16	1-1/8	7/16
BG1G12	1/2	1/2	7/8	1-3/16	9/16
BG1G16	5/8	5/8	1-1/8	1-3/8	11/16
BG1G20	3/4	3/4	1-5/16	1-11/16	13/16
BG1G24	1	1	1-3/4	2-3/16	1-1/16

product code	bolt dia	A	B	C	D dia
BH1Z08	5/16	1/16	5/8	7/8	3/8
BH1Z10	3/8	1/16	13/16	1-1/8	7/16
BH1Z12	1/2	1/8	15/16	1-3/16	9/16
BH1Z16	5/8	1/8	1-1/8	1-3/8	11/16
BH1Z20	3/4	3/16	1-5/16	1-11/16	13/16
BH1Z24	1	3/16	1-3/4	2-3/16	1-1/16

product code	bolt dia	A	B	C	D dia
BF2G08	5/16	1/8	1	7/8	3/8
BF2G10	3/8	3/16	1-3/16	1-1/8	7/16
BF2G12	1/2	1/4	1-1/2	1-3/16	9/16
BF2G16	5/8	5/16	1-15/16	1-3/8	11/16
BF2G20	3/4	3/8	2-1/4	1-11/16	13/16
BF2G24	1	1/2	3	2-3/16	1-1/16

product code	bolt dia	A	B	C	D dia
BG2G08	5/16	5/16	1	7/8	3/8
BG2G10	3/8	3/8	1-3/16	1-1/8	7/16
BG2G12	1/2	1/2	1-1/2	1-3/16	9/16
BG2G16	5/8	5/8	1-15/16	1-3/8	11/16
BG2G20	3/4	3/4	2-1/4	1-11/16	13/16
BG2G24	1	1	3	2-3/16	1-1/16