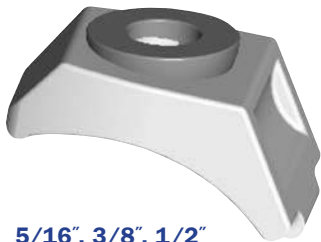


Type BK1

- **Self Adjusting Clamp to suit any thickness of steel**
- **Will suit parallel or tapered flanges**
- **Manufactured from high strength ductile iron**
- **Hot Dip Galvanized for corrosion protection**
- **All loads guaranteed with a safety factor of 5:1**

Type BK1 Adjustable Clamp for all Steelwork Types



5/16", 3/8", 1/2"



5/16", 3/4", 1"

The Type BK1 clamp is a self adjusting clamp consisting of two parts. The body has a spherical seat cast into it to allow a hemispherical washer to sit in and rotate. This allows the body to adjust to any clamping thickness while providing a flat surface for a nut or bolt to be tightened down onto it. This product is ideal for applications where the flange thickness cannot easily be measured or where the flange thickness may vary throughout a project. Due to its clamping action, it is also suitable for clamping tapered flanges and rails up to 15 degrees.

All sizes of BK1 clamps have a wide back tail section to allow the clamp to bridge the gap of a slotted hole and also to connect to the open face of metal framing strut channel. The 5/16", 3/8" and 1/2" products have an additional cut out in the tail to provide a tab that fits inside the open face of the strut.

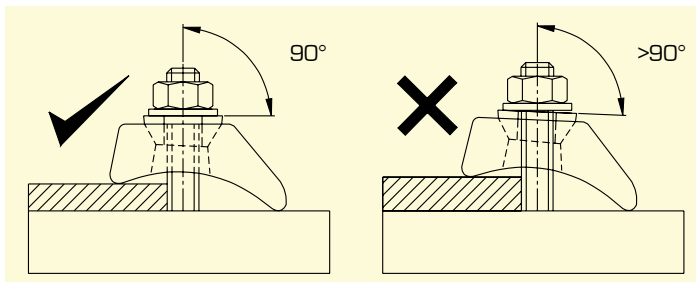
Long shims (BF2 and BG2) can be used to increase the clamping range. See page 12 for details. To make selecting the appropriate shims easier, please refer to Table 1 on page 16.

The Safe Working Loads (SWL) are based on assemblies in typical application conditions.

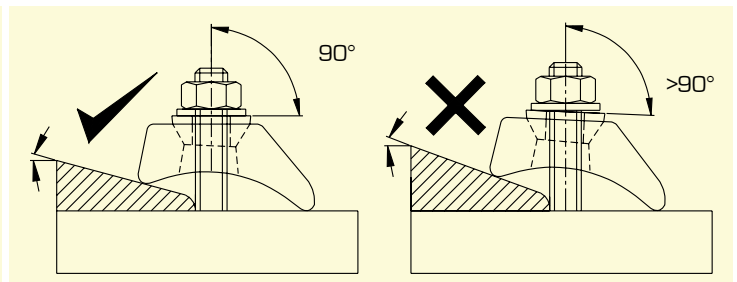
product code	A bolt dia	B1	B2	C	D	width	torque (ft lb)	tensile SWL (lbs) (per bolt)	friction SWL (lbs) (per 4 bolts)
BK1G08	5/16	1/8 to 1/2	1/8 to 3/8	1-5/8	11/16	1-5/8	4	281	/
BK1G10	3/8	1/8 to 5/8	1/8 to 1/2	2-1/8	7/8	1-5/8	14	562	/
BK1G12	1/2	1/8 to 11/16	1/8 to 5/8	1-7/8	1	1-11/16	51	926	292
BK1G16	5/8	1/8 to 15/16	N/A	2-3/8	1-1/8	1-7/8	109	1484	877
BK1G20	3/4	1/8 to 1-3/16	N/A	2-7/8	1-3/8	2-7/16	210	2151	2473
BK1G24	1	1/8 to 1-7/16	N/A	3-3/8	1-13/16	2-15/16	355	2866	4047



Do not exceed the Safe Working Loads (SWL) specified.



Installation Guide for Parallel Flanges



Installation Guide for Tapered Flanges

