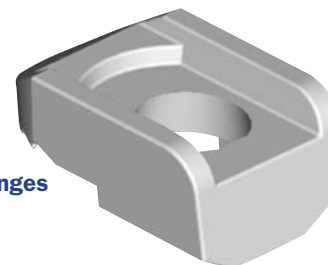


# Type BT

- **Manufactured from high strength ductile iron**
- **Hot Dip Galvanized for corrosion protection**
- **All loads guaranteed with a safety factor of 5:1**

The Type BT clamp is specifically designed to clamp to the tapered flanges of Structural I-Beams and steel channels. The clamp has a recessed upper surface that is designed to hold the head of a bolt in place while the nut is tightened. The rear section of the clamp is called the tail and is available in two different tail lengths: size 1 and size 2 [see Dimension E on the table below]. By selecting the appropriate tail length and with the use of BEAMCLAMP shims, any thickness of steel flange can be connected. To make selecting the correct tail length easier, please refer to Tables 2 and 3 on page 17.

**Type BT  
For Tapered Flanges**



*The Safe Working Loads (SWL) are based on assemblies in typical application conditions.*

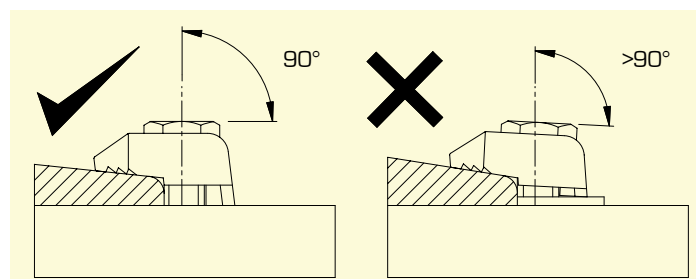
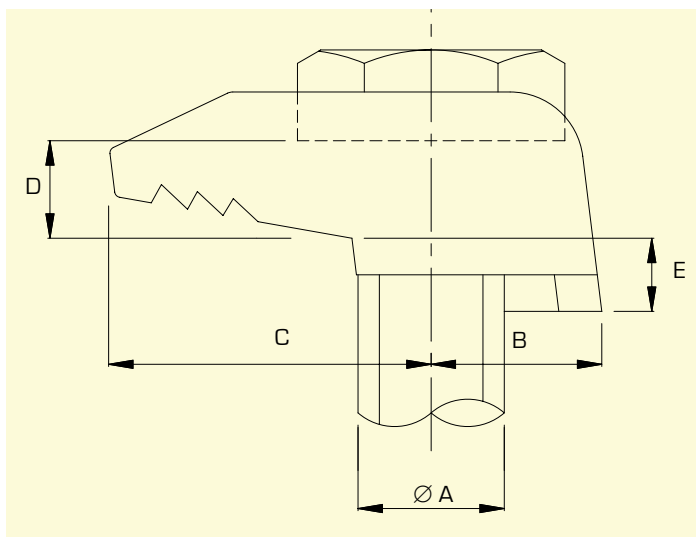
product code	A bolt dia	B	C	D	E		width	torque (ft lb)	tensile SWL (lbs) (per bolt)	friction SWL (lbs) (per 4 bolts)
					1	2				
BT G12	1/2	5/8	1	5/16	3/16	1/4	1-1/8	51	1293	292
BT G16	5/8	11/16	1-1/4	3/4	1/4	5/16	1-7/16	109	2219	877
BT G20	3/4	13/16	1-3/8	7/16	1/4	3/8	1-3/4	210	3703	2473

Add 1 or 2 to the product code to indicate the desired tail length. For example, a 1/2" bolt diameter with a 1/4" tail would be product code BT2G12.

The Type BT is available in 1/2", 5/8", and 3/4" diameters only.



Do not exceed the Safe Working Loads (SWL) specified.



**Installation Guide**

