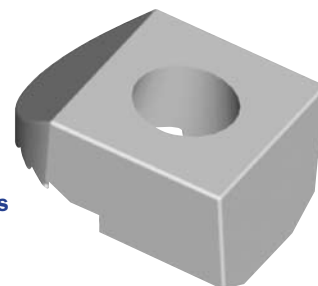


Type BW

- **Manufactured from high strength ductile iron**
- **Hot Dip Galvanized for corrosion protection**
- **All loads guaranteed with a safety factor of 5:1**

The Type BW clamp is specifically designed to clamp to the tapered flanges of Structural I-Beams and steel channels. The clamp has a flat upper surface that allows a nut to be tightened down. The rear section of the clamp is called the tail and is available in two different tail lengths: size 1 and size 2 [see Dimension E in the table below]. By selecting the appropriate tail length and with the use of BEAMCLAMP packing shims, any thickness of steel flange can be connected. To make selecting the correct tail length easier, please refer to Tables 2 and 3 located on page 17.

**Type BW
For Tapered Flanges**



The Safe Working Loads (SWL) are based on assemblies in typical application conditions.

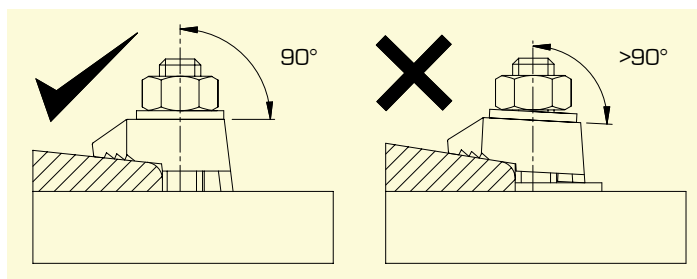
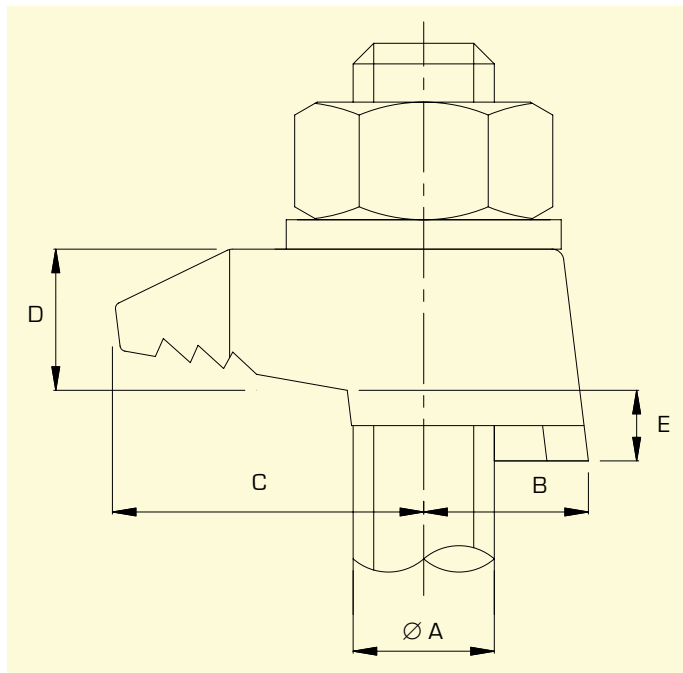
product code	A bolt dia	B	C	D	E		width	torque (ft lb)	tensile SWL (lbs) (per bolt)	friction SWL (lbs) (per 4 bolts)
					1	2				
BW G12	1/2	5/8	1	1/2	3/16	1/4	1-1/8	51	1293	292
BW G16	5/8	11/16	1-1/4	11/16	1/4	5/16	1-7/16	109	2219	877
BW G20	3/4	13/16	1-3/8	13/16	1/4	3/8	1-3/4	210	3703	2473

Add 1 or 2 to the product code to indicate the desired tail length. For example, a 1/2" bolt diameter with a 1/4" tail would be product code BW**2**G12.

The Type BW is available in 1/2", 5/8", and 3/4" diameters only.



Do not exceed the Safe Working Loads (SWL) specified.



Installation Guide

