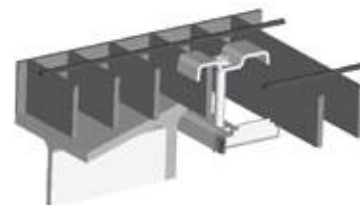


Grating Clip



Secures Steel Grating to Existing Steel Structure

The GRATING CLIP fastener by BEAMCLAMP is a cost effective method of securing steel grating to existing structural steel members. Clamping the grating eliminates costly and time consuming welding and drilling. Access below the grating is not required, resulting in a quick and simple installation.



The GRATING CLIP fastener can be installed with a screwdriver and can be easily removed allowing the grating to be repositioned or removed for maintenance purposes. The GRATING CLIP fastener will suit grating bar widths from 1-3/16" to 1-5/8" and grating bar depths up to 2" to ensure that most standard grating sections can be accommodated. This product is supplied with a galvanized finish.

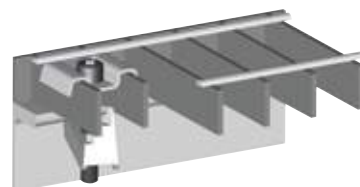
product code	screw dia (in.)	grating width (in.)		grating depth (in.)
		min	max	max
GRAT 1G08	5/16	1-3/16	1-5/8	2

GrateFix

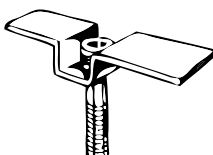


Clamp for Steel, Aluminum and Fiberglass Grating

The GRATEFIX fastener is used to securely fasten steel, aluminum and fiberglass grating to supporting steelwork. Using only a hexagon key to install, grating can be secured without welding or drilling. The GRATEFIX fastener is designed to be installed from above the grating by one person. No access below the grating is required resulting in a quick and simple installation. The GRATEFIX fastener consists of stepped malleable iron or stainless steel bottom casting complete with screw and saddle clip bracket. All items are available galvanized or in grades 304 and 316 stainless steel.

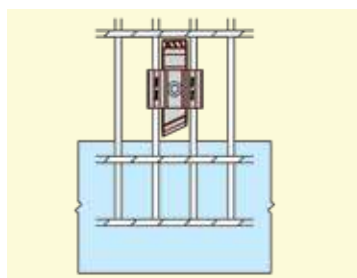


product code	material/finish	screw diameter (in.)	body width (in.)	tightening torque (ft. lb.)
GF3 S08 ASSY	304 stainless steel	5/16	5/8	6
GF1 S08 ASSY	316 stainless steel	5/16	5/8	6
GF1 G10 ASSY	galvanized malleable iron	3/8	3/4	4



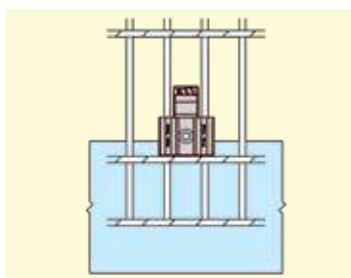
Bracket Options

In addition to the standard symmetrical bracket for aluminum and fiberglass grating, the stainless steel GRATEFIX fastener can be supplied with alternative bracket styles to suit varying bearing bar widths.



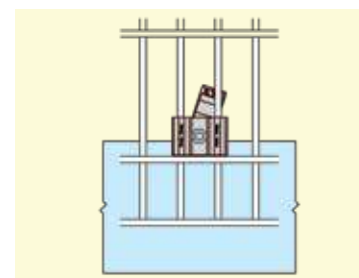
Step 1

Lower the GRATEFIX through the open part of the grating, ensure the bracket is seated over the adjacent bearing bars.



Step 2

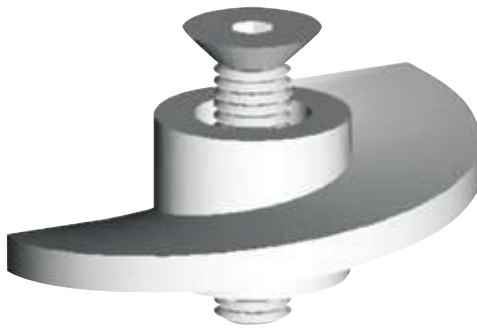
Slide the GRATEFIX towards the supporting steelwork flange as far as it will go to ensure maximum clamping force.



Step 3

Tighten the screw and ensure that the lower casting rotates until one of the steps locates on the bearing bar.

FloorFix



Secures Steel Floor Plate to Existing Steel

The FLOORFIX connector is designed for positioning raised pattern floor plates without the need for welding or drilling of the supporting steelwork. With simple hand tools, it can be installed by one person working from above and eliminates the need for access to the underside of the floor plate. The FLOORFIX is TÜV certified for vibration. The FLOORFIX connector can be secured quickly and likewise removed or repositioned with ease. The FLOORFIX connector is supplied with a galvanized finish.



Made to suit plates ranging from 1/8" to 1/2" thick and steelwork flanges up to 5/8" thick. For thicker flanges, spacers can be provided.

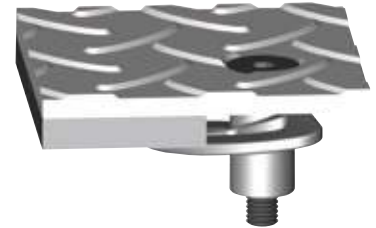
product code	screw diameter (in.)	floor plate thickness (in.)		steelwork flange thickness (in.)		tightening torque (ft. lb.)
		min	max	min	max	
FLOORFIXM08	5/16	1/8	1/2	1/8	5/8	15
FLOORFIXM10	2/8	3/16	1/2	1/8	5/8	15
FLOORFIXM12	1/2	1/4	1/2	1/8	5/8	22

FloorFix HT



High Tolerance FloorFix

The FLOORFIX HT connector is designed primarily to secure raised pattern floor plates to supporting steelwork from the top side only, with no need for drilling, tapping, bolting or welding. Working on a cam mechanism, it can be installed by one person working from above using a basic hexagon key drive.



FLOORFIX HT connector allows for a high degree of tolerance when installing steel flooring, up to +/- 0.25" of its intended position. The FLOORFIX HT connector is supplied with a galvanized finish.

Made to accept plates ranging from 1/8" to 1/2" thick and steelwork flanges up to 1" thick. For thicker flanges, spacers can be provided.

product code	screw diameter (in.)	floor plate thickness (in.)		steelwork flange thickness (in.)		tightening torque (ft. lb.)
		min	max	min	max	
FLOORFIX M08HT	5/16	1/8	1/2	1/8	1	15
FLOORFIX M10HT	3/8	3/16	1/2	1/8	1	18
FLOORFIX M12HT	1/2	1/4	1/2	1/8	1	22

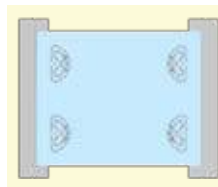
Installation Instructions for FLOORFIX and FLOORFIX HT connector

Plate Preparation



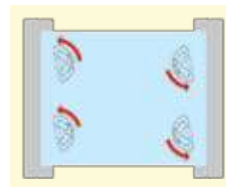
Step 1

Place the FLOORFIX or FLOORFIX HT on the underside of the floor plate. Loosely tighten the bolt, making sure the flat edge of the casting is in line with the edge of the steelwork.



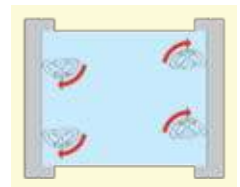
Step 2

Lower the plate into position over the supporting steelwork.



Step 3

Once the floor plate is in the desired position rotate the countersunk screw one full turn counterclockwise.



Step 4

Tighten the countersunk screw until the plate is secured. For guaranteed performance tighten to recommended torque.

G-Clip GG



Fastens Bar Grating to Structural Members

The G-CLIP GG fastener is a galvanized, carbon steel grating fastener for securing steel grating to existing steel. Hand tools can be used for ease of installation. To install, simply drop the clip in place above the grating, slide the clip toward the beam flange, and tighten the G-CLIP fastener using a 7/16" nut driver. Clips are also available in stainless steel for more corrosive environments.



Custom sizes are available on a special order basis.

product code	bolt diameter (in.)	grating thickness (in.)	tightening torque (ft. lb.)
KSGG-1A	1/4	1	5
KSGG-1B	1/4	1 1/4	5
KSGG-1C	1/4	1 1/2	5

G-Clip GM



Mounts Devices onto Floor Grating

The G-CLIP GM fastener is a galvanized steel fastener used to mount devices onto the grating surface. The G-CLIP GM fastener consists of three parts; the stamped top, threaded stud, and the lower body assembly. The lower body assembly holds in place a 1/2" nut, making installation hassle-free. Install using a spanner wrench or an adjustable open end wrench to tighten in place. This clip eliminates the need for J-bolts. The G-CLIP GM fastener can withstand 1,000 pounds of direct upward pull force with no distortions.



Lock washer and second threaded nut needed in installation not provided.

product code	stud diameter (in.)	stud length (in.)	body width (in.)
KSGM-12	1/2	3	7/8



The lower body assembly is constructed with a specially designed stamped wing component that keeps a 1/2" nut from turning.